

Index



Part Number	Part Description	Page #
6452	Cradle only - complete weldment Black	27
6453	Cradle - complete weldment Black w/ hardware and backer plates	27
8001-031	10" Fiberglass Channel pre-drilled	1
8001-034	10" Fiberglass Channel pre-drilled	1
8001-037	10" Fiberglass Channel pre-drilled	1
8001-040	10" Fiberglass Channel pre-drilled	1
8001-043	10" Fiberglass Channel pre-drilled	1
8002-031	3" Fiberglass Channel pre-drilled	1
8002-034	3" Fiberglass Channel pre-drilled	1
8002-037	3" Fiberglass Channel pre-drilled	1
8002-040	3" Fiberglass Channel pre-drilled	1
8002-043	3" Fiberglass Channel pre-drilled	1
8005	60 Reg. Chain w/ connector - 2.5'	5
8006	60BS10HTX1 Motor Sprocket	5
8007	60BS24HTX1 1/4 Motor Sprocket	5
8010	Hydraulic Motor	7
8011 <i>*DISC*</i>	Sprocket & Chain Guard Cover (replacement 8049)	8
8012 <i>*DISC*</i>	Head Pulley End Plate idle side (replacement 8050, 8052)	9
8013 <i>*DISC*</i>	Head Pulley End Plate drive side (replacement 8051, 8052)	9

Part Number	Part Description	Page #
8014	Head Pulley Backer Plate drive side	11
8015	Roof Stand Assembly	12
8015-001	Roof Stand Mounting Bracket drive side	13
8015-002	Roof Stand Mounting Bracket idle side	13
8015-003	Roof Stand Frame	13
8015-007	Roof Stand Lynch Pin	13
8015-008	Roof Stand Adjustable Leg w/ pivoting footpad	13
8018	Hydraulic Emergency Stop w/ fittings (E-Stop)	18
8018-001	Hydraulic Emergency Stop handle only (E-Stop handle)	18
8019-031	Hydraulic Hose - Orange Pressure 23' 11"	19
8019-034	Hydraulic Hose - Orange Pressure 26' 11"	19
8019-037	Hydraulic Hose - Orange Pressure 29' 11"	19
8019-040	Hydraulic Hose - Orange Pressure 32' 11'	19
8019-043	Hydraulic Hose - Orange Pressure 35' 11"	19
8020-031	Hydraulic Hose - Orange Return 25' 5"	19
8020-034	Hydraulic Hose - Orange Return 28' 5"	19
8020-037	Hydraulic Hose - Orange Return 31' 5"	19
8020-040	Hydraulic Hose - Orange Return 34' 5"	19
8020-043	Hydraulic Hose - Orange Return 37' 5"	19
8021	Bulk Head Fitting	20

Index



Part Number	Part Description	Page #
8022-031	Belt & Lacing (200# PVC cover x cover, R2 lacing) 712.5"	22
8022-034	Belt & Lacing (200# PVC cover x cover, R2 lacing) 784.5"	22
8022-037	Belt & Lacing (200# PVC cover x cover, R2 lacing) 856.5"	22
8022-040	Belt & Lacing (200# PVC cover x cover, R2 lacing) 928.5"	22
8022-043	Belt & Lacing (200# PVC cover x cover, R2 lacing) 1000.5"	22
8023-031 <i>*DISC*</i>	Belt & Lacing (PVC style cover one side) 708" (replacement 8022-031)	21
8023-034 <i>*DISC*</i>	Belt & Lacing (PVC style cover one side) 780" (replacement (8022-034)	21
8023-037 <i>*DISC*</i>	Belt & Lacing (PVC style cover one side) 852" (replacement 8022-037)	21
8023-040 <i>*DISC*</i>	Belt & Lacing (PVC style cover one side) 924" (replacement 8022-040)	21
8023-043 <i>*DISC*</i>	Belt & Lacing (PVC style cover one side) 996" (replacement 8022-043)	21
8024	Paddle w/ Grip Pad & Hardware	23
8026	Hydraulic Hose Clamp w/ hardware	19
8028	Tail Section Laser Cut Stainless Assembly (includes 1 each of parts 8028-005 thru 8028-010)	14
8028-005	Tail Section Splice Plates stainless drive side set	15
8028-006	Tail Section Splice Plates stainless idle side set	15
8028-007	Tail Section Side Panels stainless drive side	15
8028-008	Tail Section Side Panels stainless idle side	15
8028-009	Tail Section Bottom Guard stainless	15
8028-010	Tail Section Back Panel Guard stainless w/ logo	15

Part Number	Part Description	Page #
8029	Cross Support Assembly w/ mounting hardware	24
8029-001	Cross Support Idler Wheel	25
8029-002	Cross Support Idler Wheel Bushing (center wheel only)	25
8029-003	Cross Support Nylon Guide	25
8029-004	Cross Support Weldment	25
8030	Tail Pulley Bearing Adjuster & Bracket Assembly	3, 4
8030-001	Tail Pulley B7 adjuster rod full thread 3/8" x 6"	3, 4
8030-002	Tail Pulley adjuster L bracket	3, 4
8031	Tail Section Nylon Shingle Slide	17
8032	Roller Support Shaft Assembly	26
8032-001	Roller Support Shaft Wheel	26
8032-002	Roller Support Shaft	26
8032-003	Roller Support Shaft Spacer kit (5 per kit)	26
8033	Cradle Backer Plate 12 ga. 201 stainless steel	28
8034	Conveyor Support Angle stainless steel	29
8035	Flange Roller Assembly w/ hardware (return side)	30
8036	Support Bracket for E-Stop & Motor adjuster	31
8037	Hydraulic Motor adjuster bolt	31
8038	Loom clamp	31
8039	Head Pulley Backer Plate idle side	11
8040	Nylon Fiberglass Channel Spacer	2
8041	Alligator Clips strip of 16	21
8042	Lacing Connecting Cable 16" w/ washers	21
8044	Hose for E-Stop and Hydraulic Motor	31
8046	R2 Alligator Clips 2 strips of 9 (pkg of 18)	22

Index



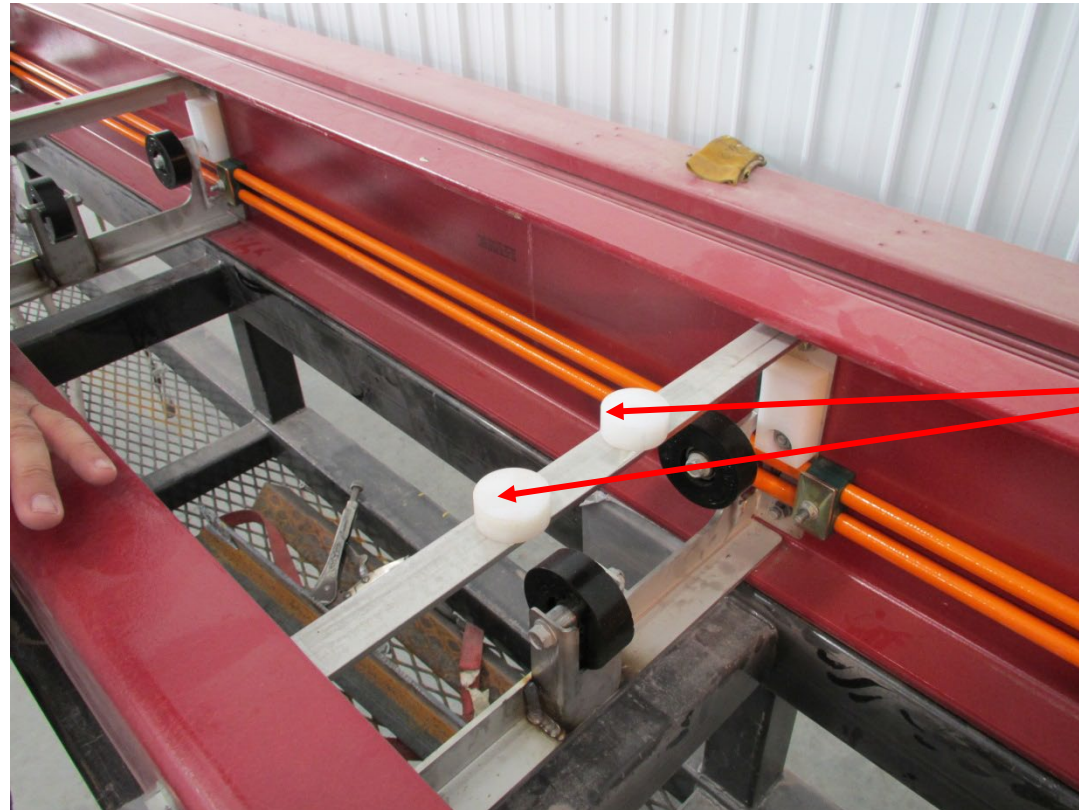
Part Number	Part Description	Page #
8047	R2 Lacing Connecting Cable 16" w/ washers	22
8048	R2 Rivets (pkg of 18) (2 pkg per belt)	22
8049	Sprocket & Chain Guard Cover	8
8050	Head Pulley End Plate idle side	10
8051	Head Pulley End Plate drive side	10
8052	Head Section Handle (drive or idle side)	10
8053-031	Belt & Lacing (PVC style cover x cover) assembly 712.5" (belt, R2 lacing, paddles with rubber pad & hardware installed)	22
8053-034	Belt & Lacing (PVC style cover x cover) assembly 784.5" (belt, R2 lacing, paddles with rubber pad & hardware installed)	22
8053-037	Belt & Lacing (PVC style cover x cover) assembly 856.5" (belt, R2 lacing, paddles with rubber pad & hardware installed)	22
8053-040	Belt & Lacing (PVC style cover x cover) assembly 928.5" (belt, R2 lacing, paddles with rubber pad & hardware installed)	22
8053-043	Belt & Lacing (PVC style cover x cover) assembly 1000.5" (belt, R2 lacing, paddles with rubber pad & hardware installed)	22
8055	Head Pulley Bearing & Bearing Holder	6
8056	Head Pulley Drum w/ belt lagging and shaft	6
8057	Tail Pulley drum and shaft	3
8060	Tail Pulley Bearing & Bearing Holder w/ adjusting hole	3
8061	Reinforced Cross Support unit assembly	16
8061-001	Reinforced Cross Support unit (weldment only)	16
8065	Motor Backer Plate	11

Fiberglass Channel



	Part Number	Part Description
1	8001	10" Fiberglass Channel pre-drilled (8001-031 thru 8001-043)
2	8002	3" Fiberglass Channel pre-drilled (8002-031 thru 8002-043)

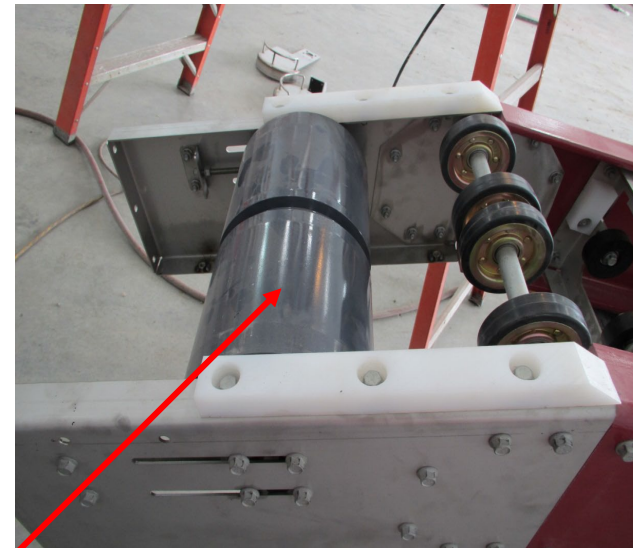
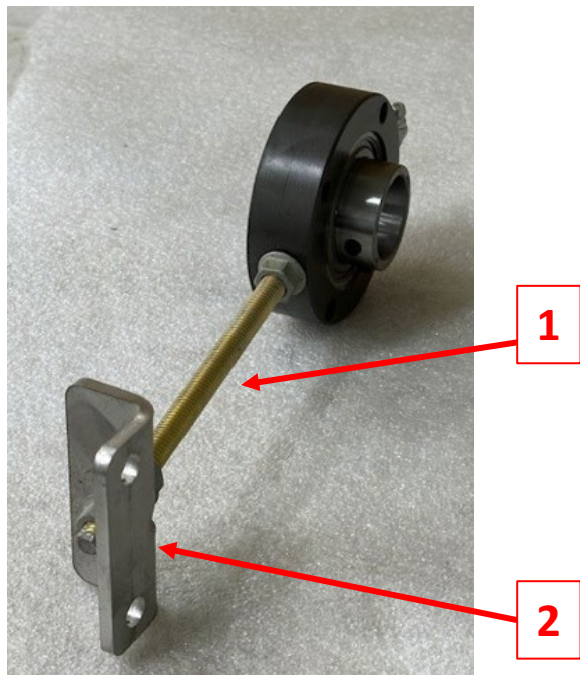
Channel Spacer



1

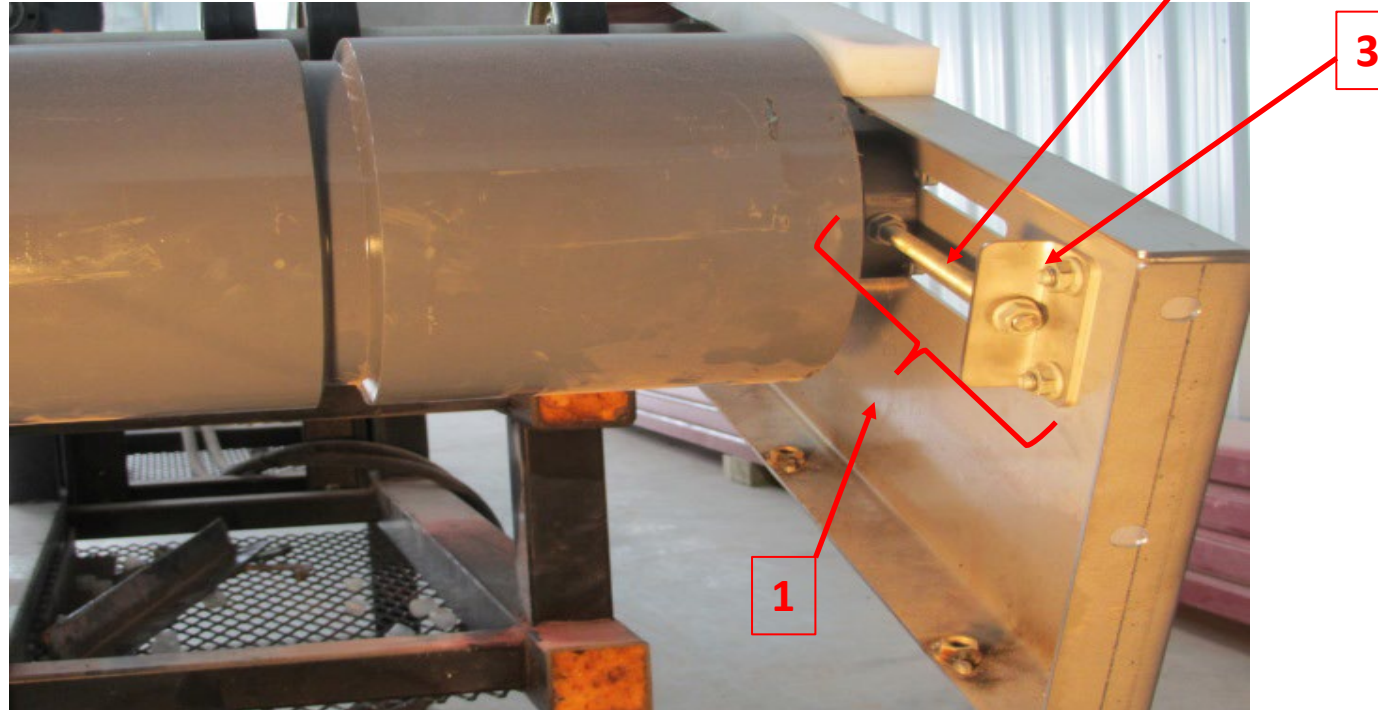
	Part Number	Part Description
1	8040	Nylon Fiberglass Channel Spacer

Bearing and Holder



	Part Number	Part Description
1	8030-001	Tail Pulley B7 adjuster rod full thread 3/8" x 6"
2	8030-002	Tail Pulley adjuster L bracket
3	8057	Tail Pulley Drum & Shaft
4	8060	Tail Pulley Bearing & Bearing Holder w/ adjusting hole

Tail Pulley Bearing Adjuster & Bracket



	Part Number	Part Description
1	8030	Tail Pulley Bearing Adjuster & Bracket Assembly
2	8030-001	Tail Pulley B7 adjuster rod full thread 3/8" x 6"
3	8030-002	Tail Pulley adjuster L bracket

60 Reg. Chain

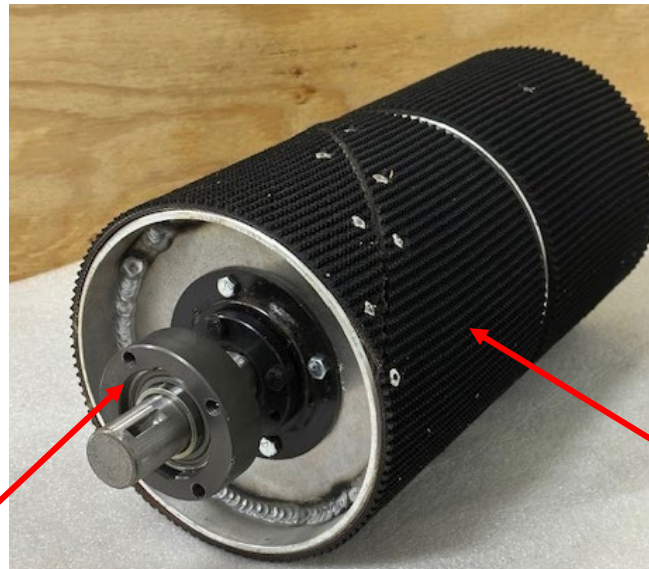


	Part Number	Part Description
1	8005	60 Reg. Chain w/connector - 2.5'
2	8006	60BS10HTX1 Motor Sprocket
3	8007	60BS24HTX1 1/4 Motor Sprocket

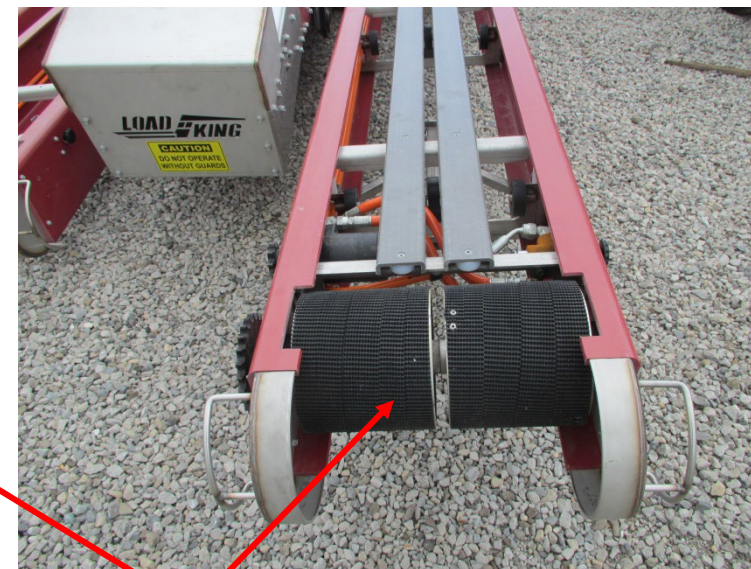
Head Pulley Drum and Shaft



1



2



	Part Number	Part Description
1	8055	Head Pulley Bearing & Bearing holder
2	8056	Head Pulley Drum w/belt lagging and Shaft

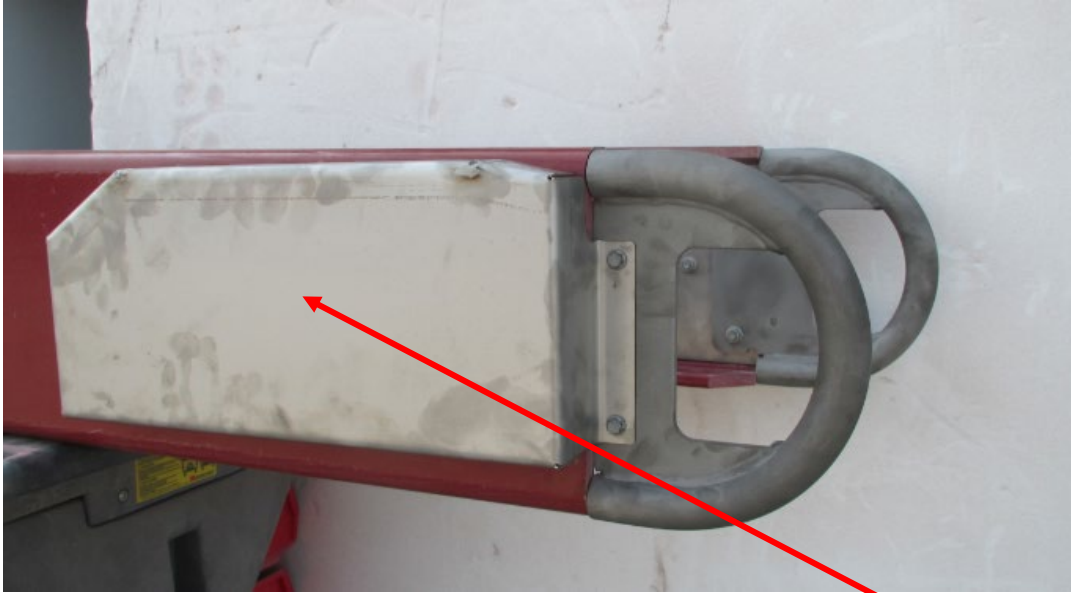
Hydraulic Motor



1

	Part Number	Part Description
1	8010	Hydraulic Motor

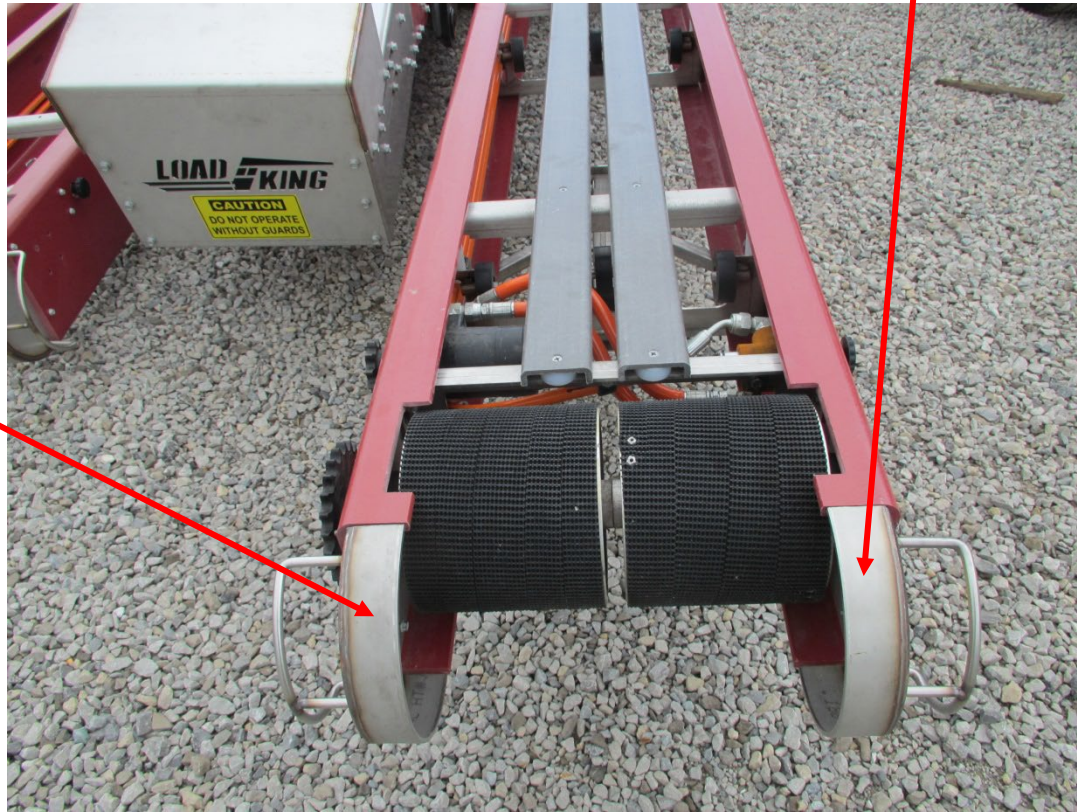
Sprocket & Chain Guard Cover



1

	Part Number	Part Description
1	8049	Sprocket & Chain Guard Cover

Head Pulley End Plate

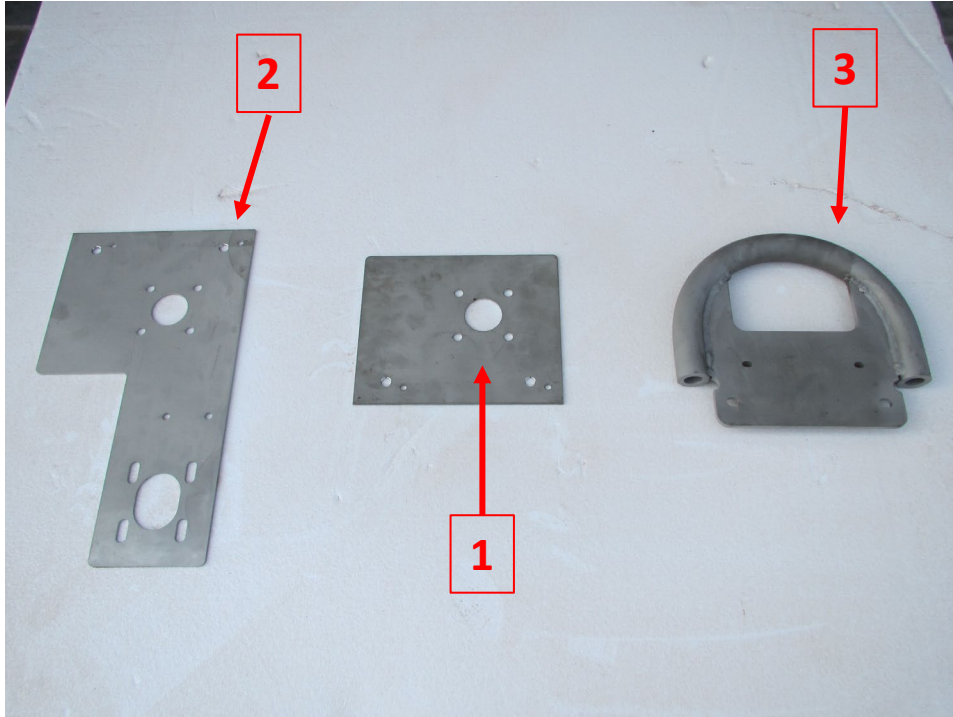


Head Pulley End Plate



	Part Number	Part Description
1	8012 <i>*DISCONTINUED*</i>	Head Pulley End Plate idle side
2	8013 <i>*DISCONTINUED*</i>	Head Pulley End Plate drive side

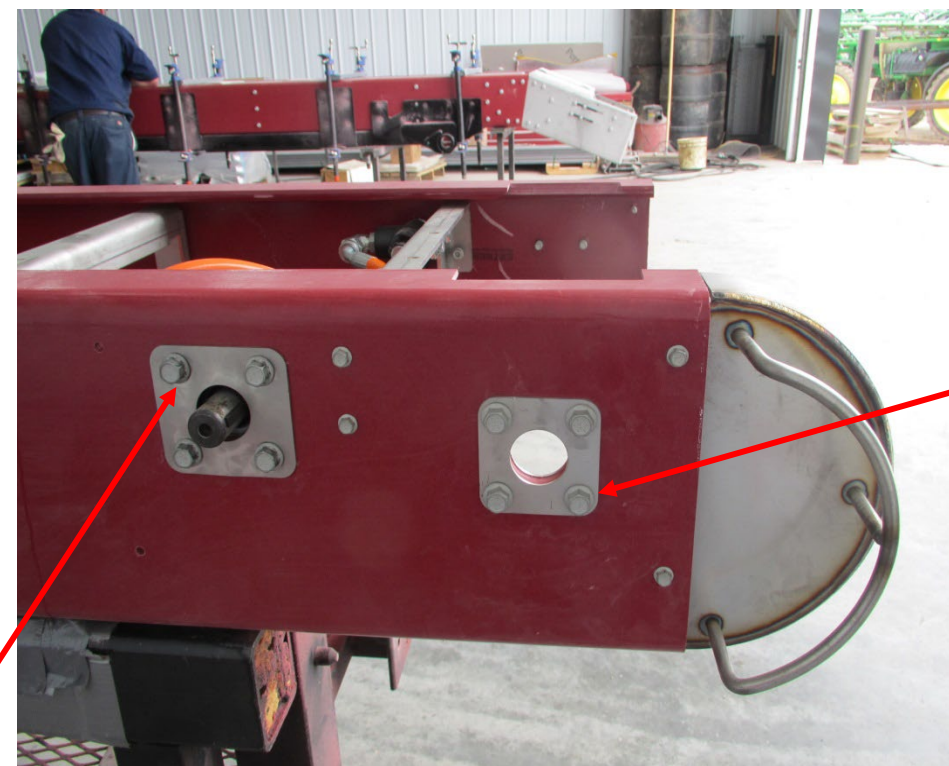
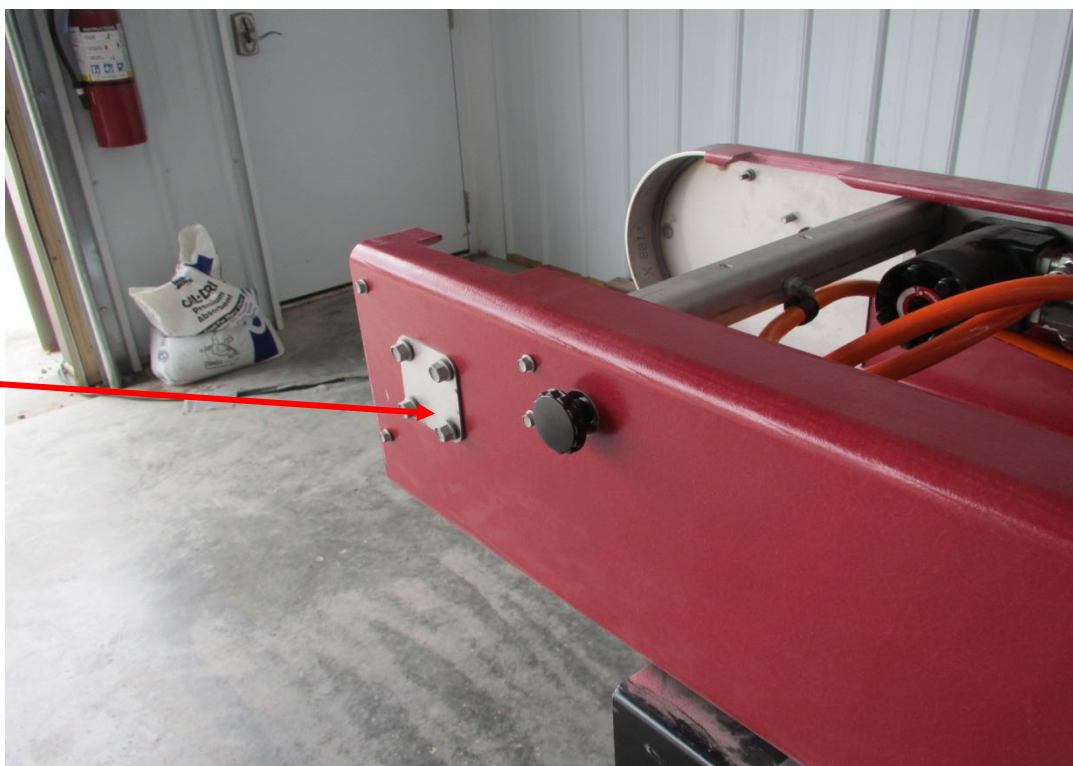
Head Pulley End Plates and Head Section Handle



	Part Number	Part Description
1	8050	Head Pulley End Plate idle side
2	8051	Head Pulley End Plate drive side
3	8052	Head Section Handle (drive or idle side)

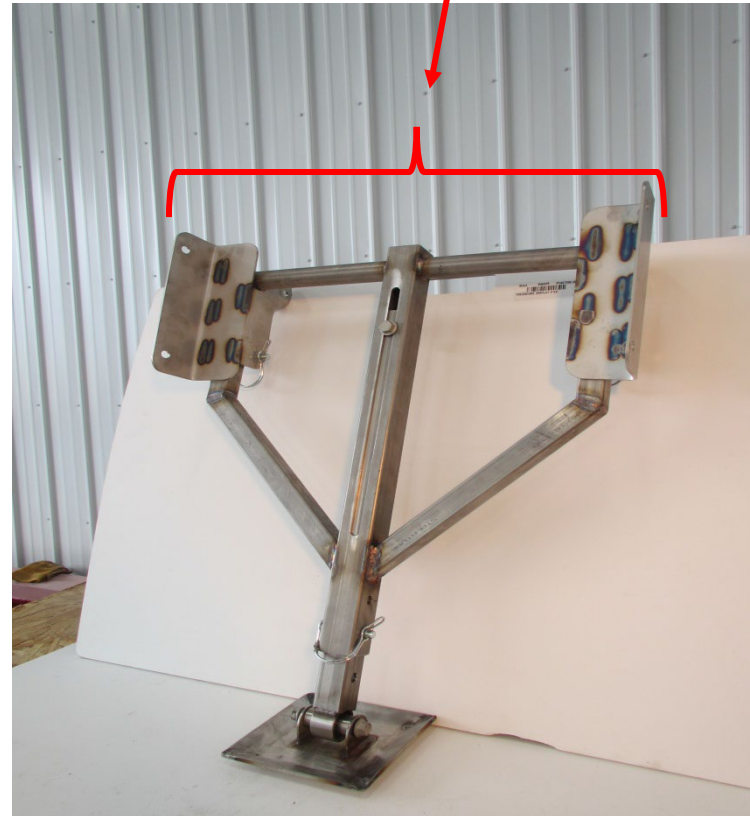
Head Pulley Backer Plate

Head Pulley & Motor Backer Plates



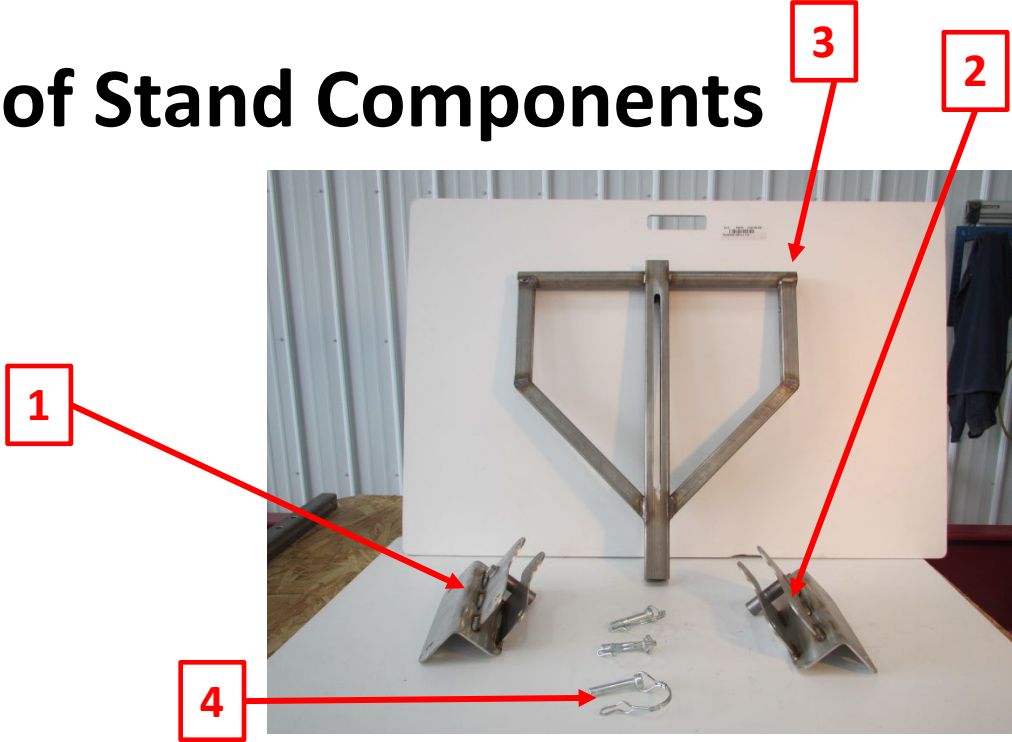
	Part Number	Part Description
1	8039	Head Pulley Backer Plate idle side
2	8014	Head Pulley Backer Plate drive side
3	8065	Motor Backer Plate

Roof Stand Assembly



	Part Number	Part Description
1	8015	Roof Stand Assembly

Roof Stand Components



	Part Number	Part Description
1	8015-001	Roof Stand Mounting Bracket drive side
2	8015-002	Roof Stand Mounting Bracket idle side
3	8015-003	Roof Stand Frame
4	8015-007	Roof Stand Lynch Pin
5	8015-008	Roof Stand Adjustable Leg w/ pivoting footpad

Tail Section Laser Cut Assembly

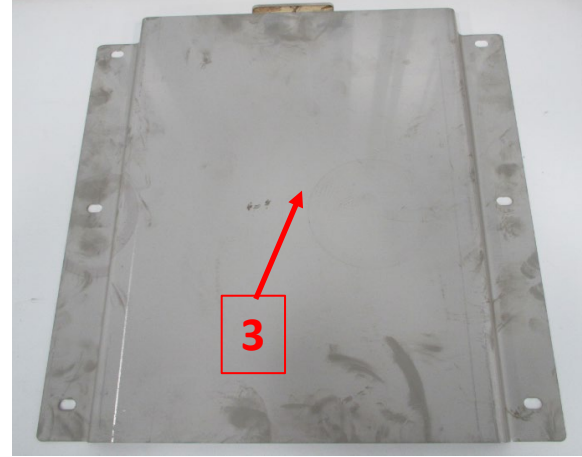


	Part Number	Part Description
1	8028	Tail Section Laser Cut Stainless Assembly

Tail Section Side Panel



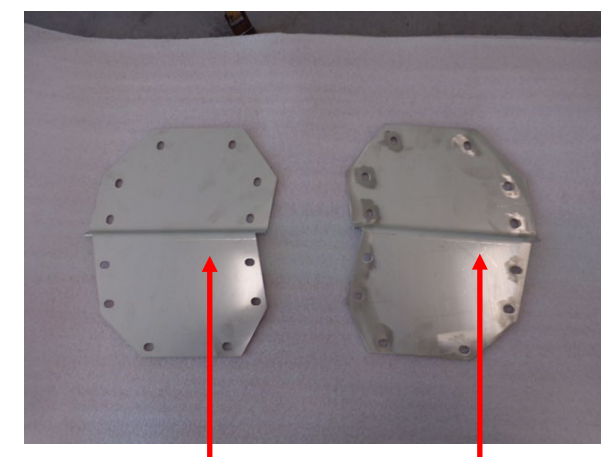
Tail Section Bottom Guard



Tail Section Back Panel Guard



Splice Plates



2

1

3

4

6

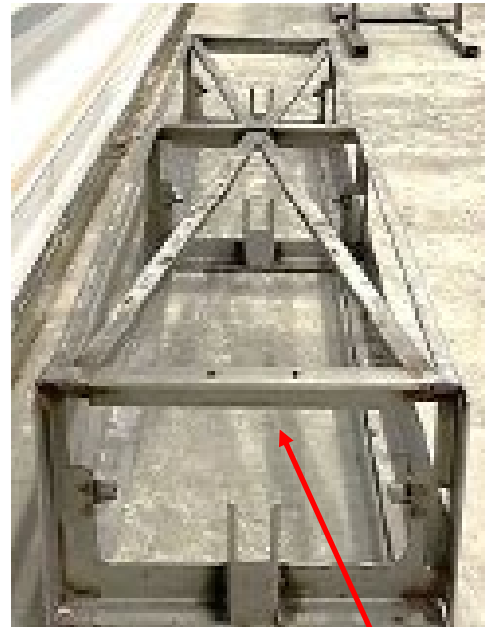
5

	Part Number	Part Description
1	8028-007	Tail Section Side Panels stainless drive side
2	8028-008	Tail Section Side Panels stainless idle side
3	8028-009	Tail Section Bottom Guard stainless
4	8028-010	Tail Section Back Panel Guard stainless w/ logo
5	8028-005	Tail Section Splice Plates stainless drive side set
6	8028-006	Tail Section Splice Plates stainless idle side set

Reinforced Cross Support Unit



1



2

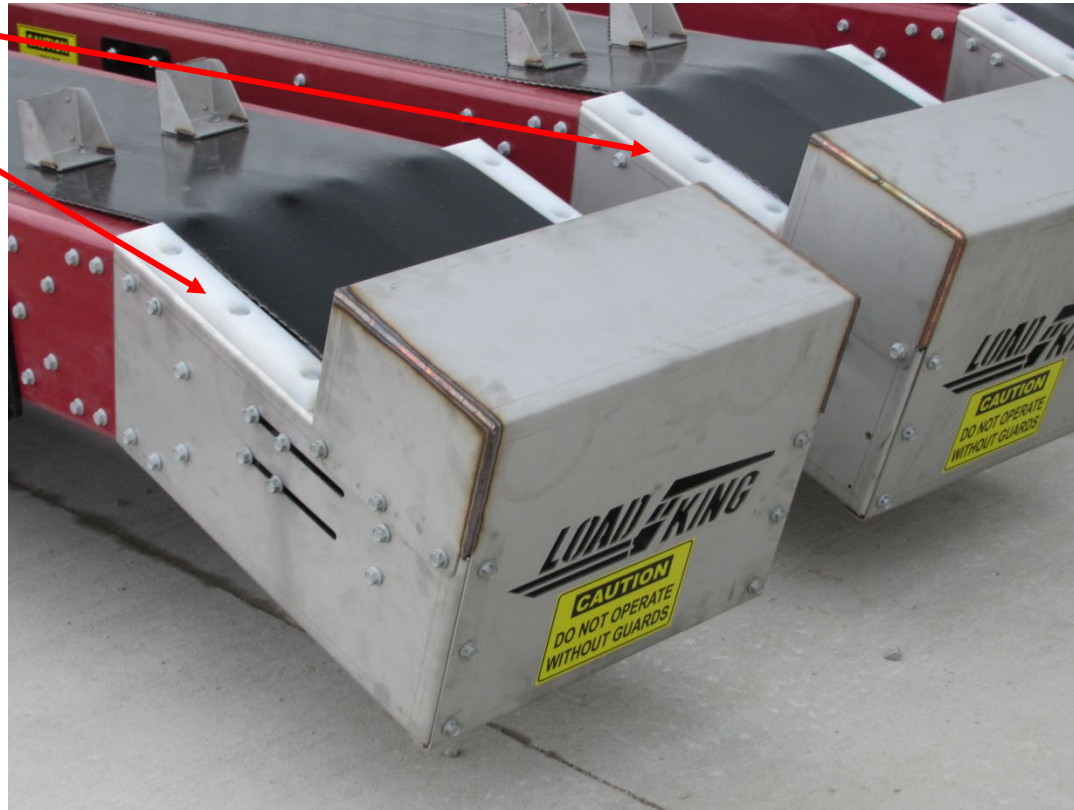


8061 installed

	Part Number	Part Description
1	8061	Reinforced Cross Support unit assembly
2	8061-001	Reinforced Cross Support unit assembly (weldment only)

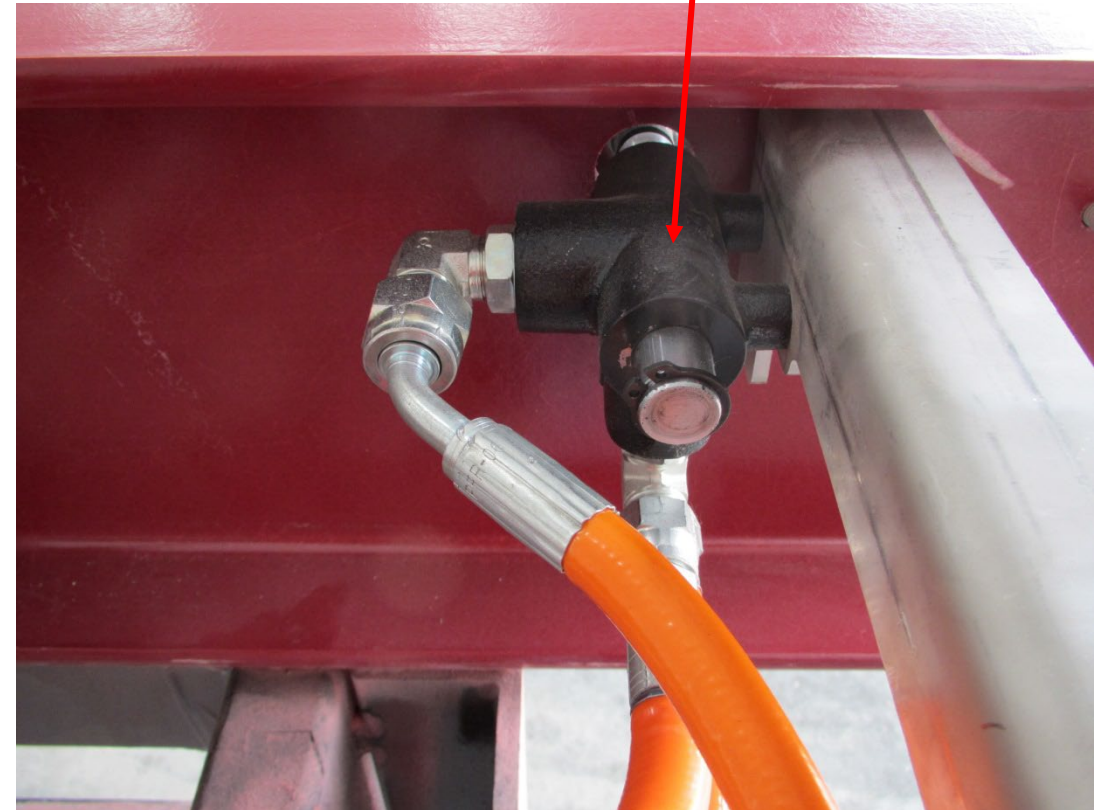
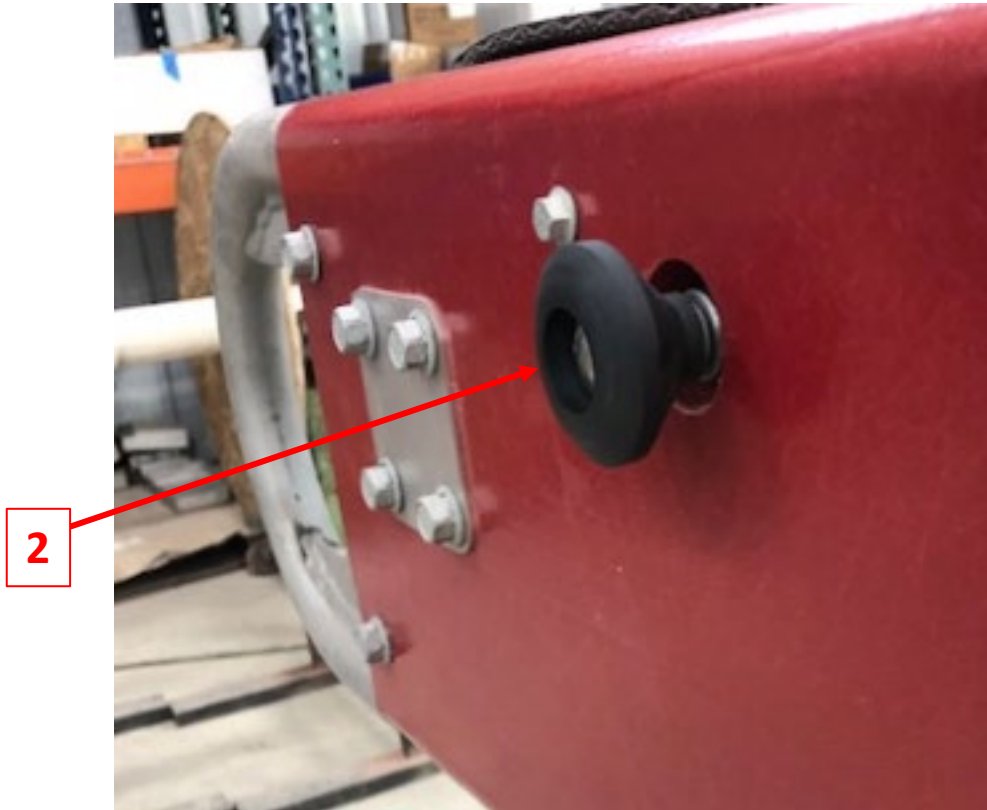
Tail Section Nylon Shingle Slide

1



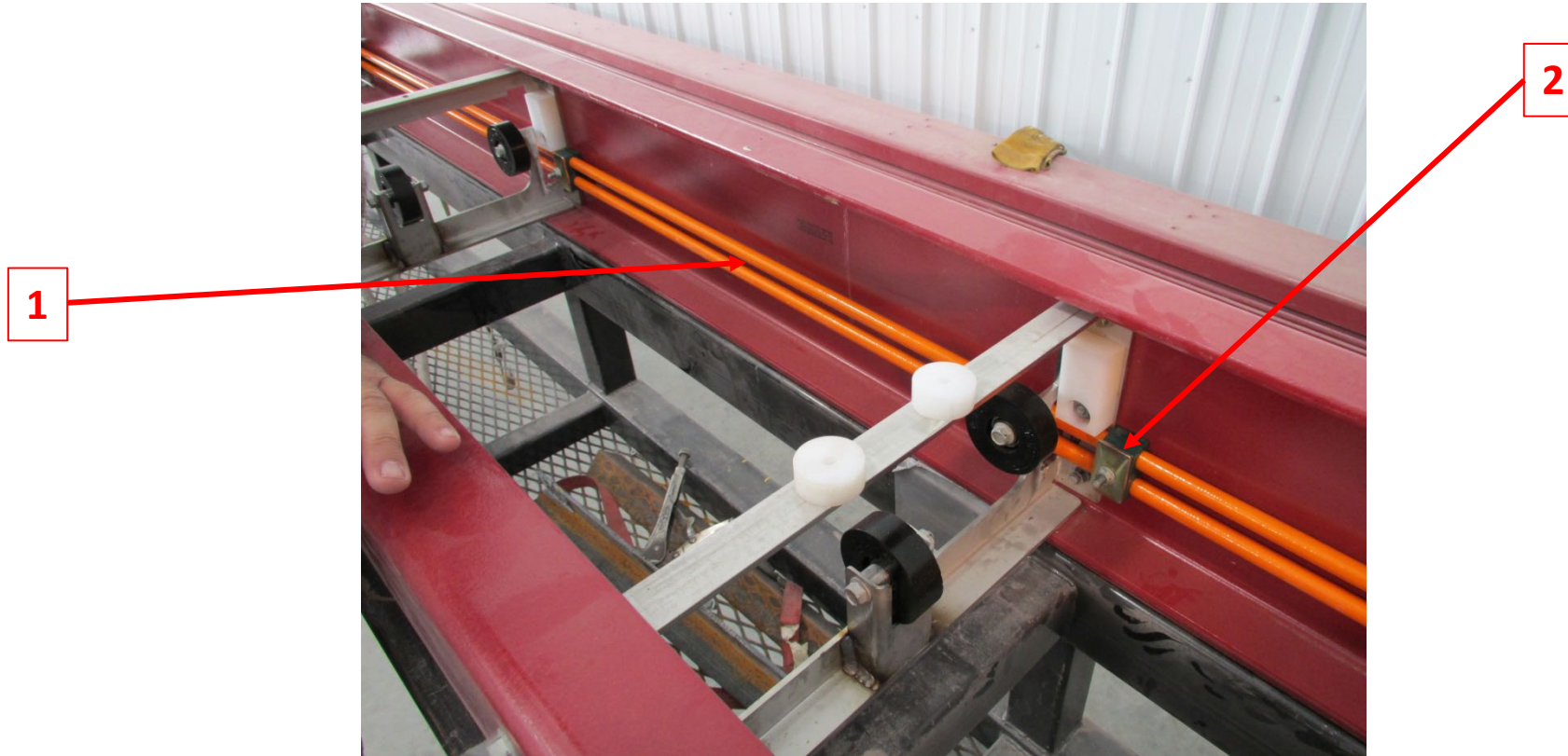
	Part Number	Part Description
1	8031	Tail Section Nylon Shingle Slide

Hydraulic Emergency Stop (E-Stop) and Handle



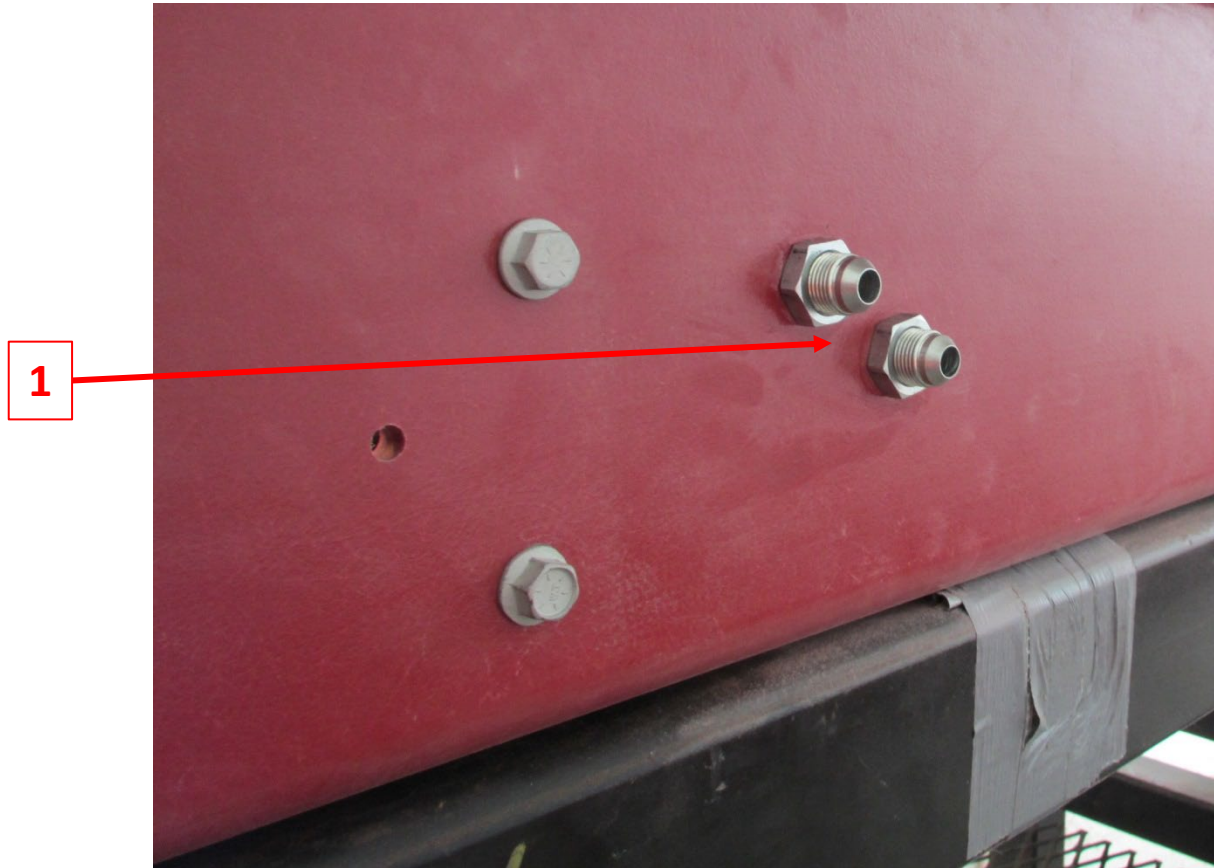
	Part Number	Part Description
1	8018	Hydraulic Emergency Stop w/ fittings (E-Stop)
2	8018-001	Hydraulic Emergency Stop Handle

Orange Hydraulic Hose



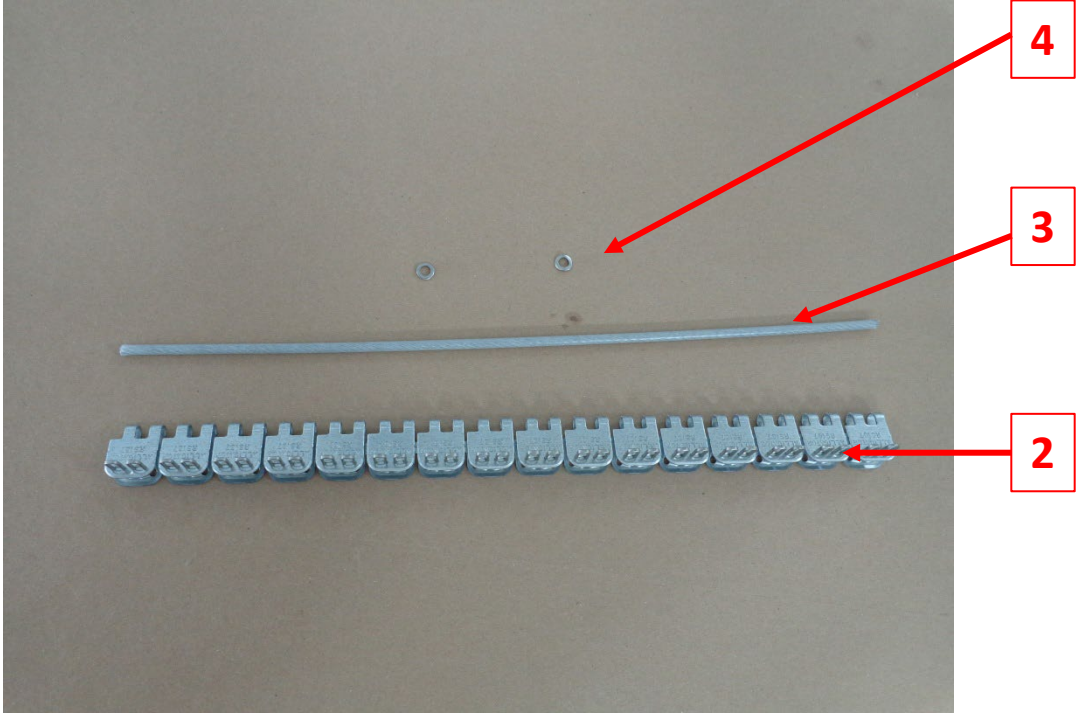
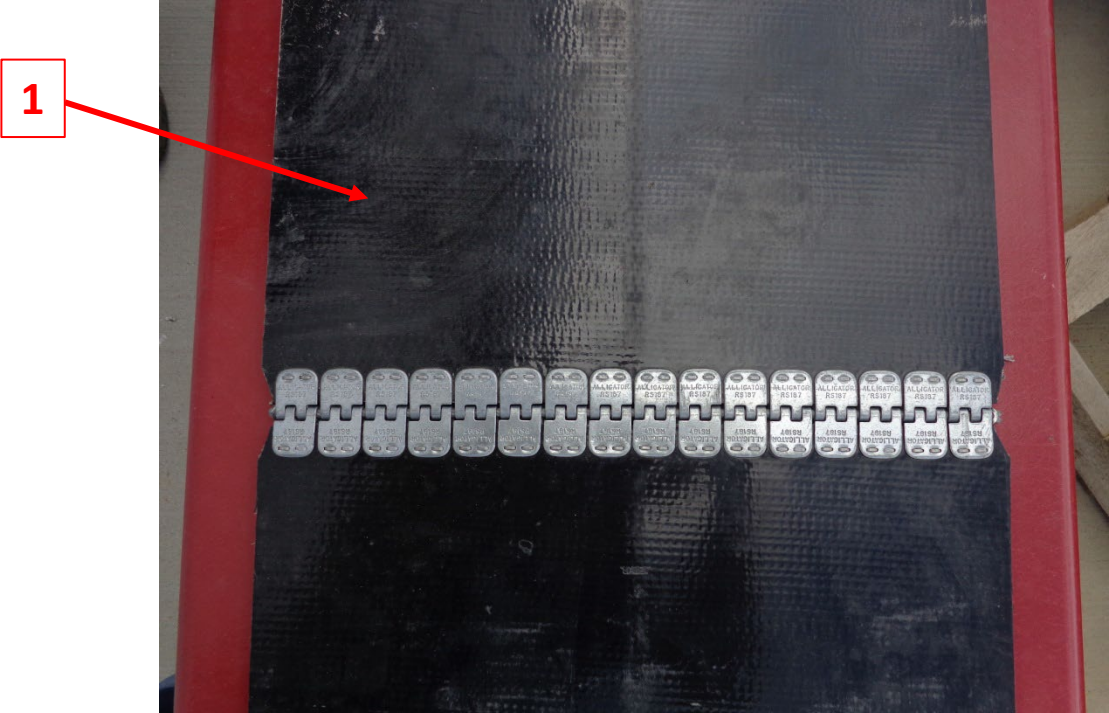
	Part Number	Part Description
1	8019	Orange Hydraulic Hose – Pressure w/ hardware (8019-031 thru 8019-043)
1	8020	Orange Hydraulic Hose – Return w/ hardware (8020-031 thru 8020-043)
2	8026	Hydraulic Hose Clamp

Bulk Head Fitting



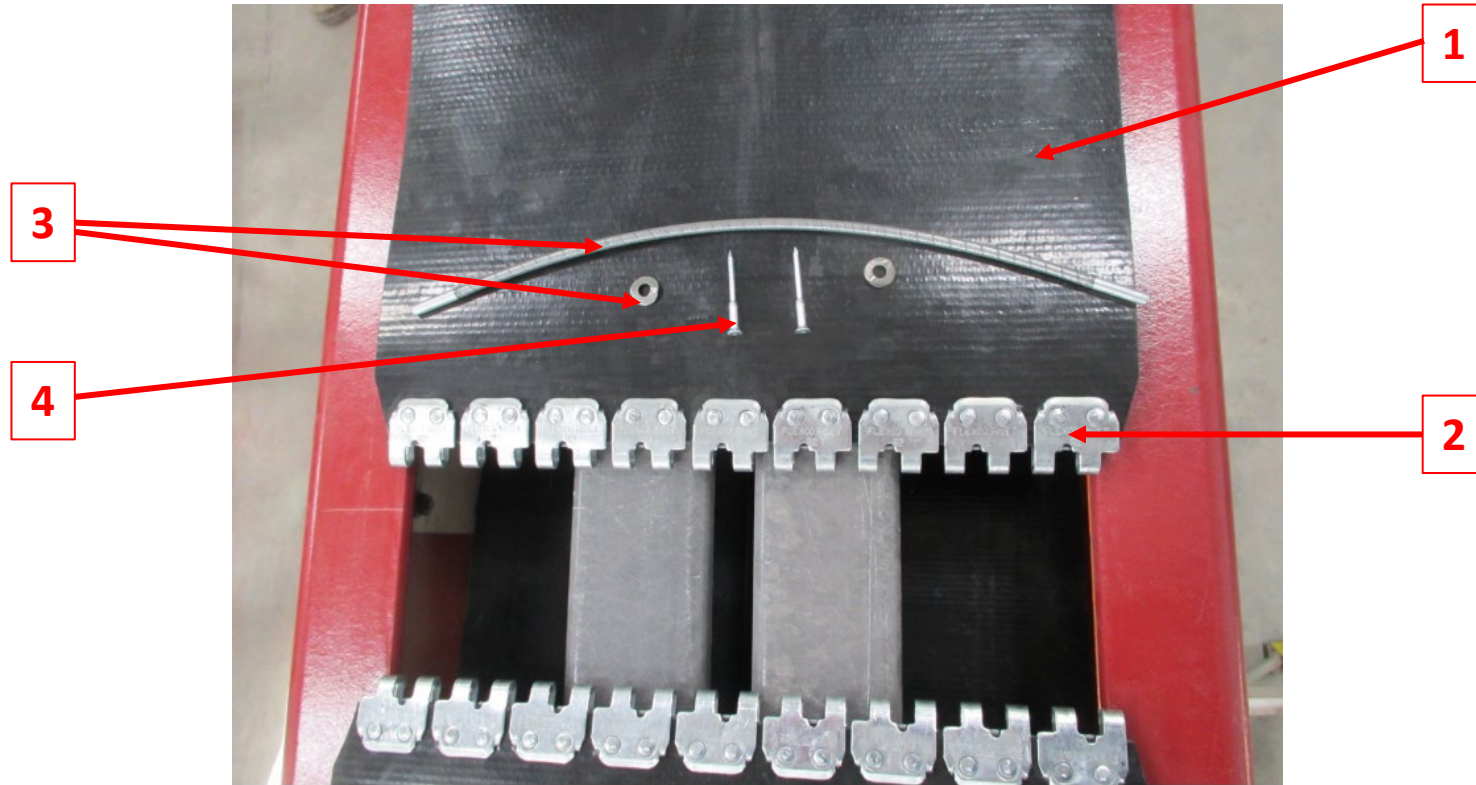
	Part Number	Part Description
1	8021	Bulk Head Fitting

Belt & Lacing Assembly



Part Number	Part Description
1	8023 <i>*DISCONTINUED*</i> Belt & Lacing PVC Style cover one side (8023-031 thru 8023-043)
2	8041 Alligator Clips strip of 16
3	8042 Lacing Connecting Cable 16" w/ washers
4	8043 <i>*DISCONTINUED*</i> Retainer Washer (now included in 8042)

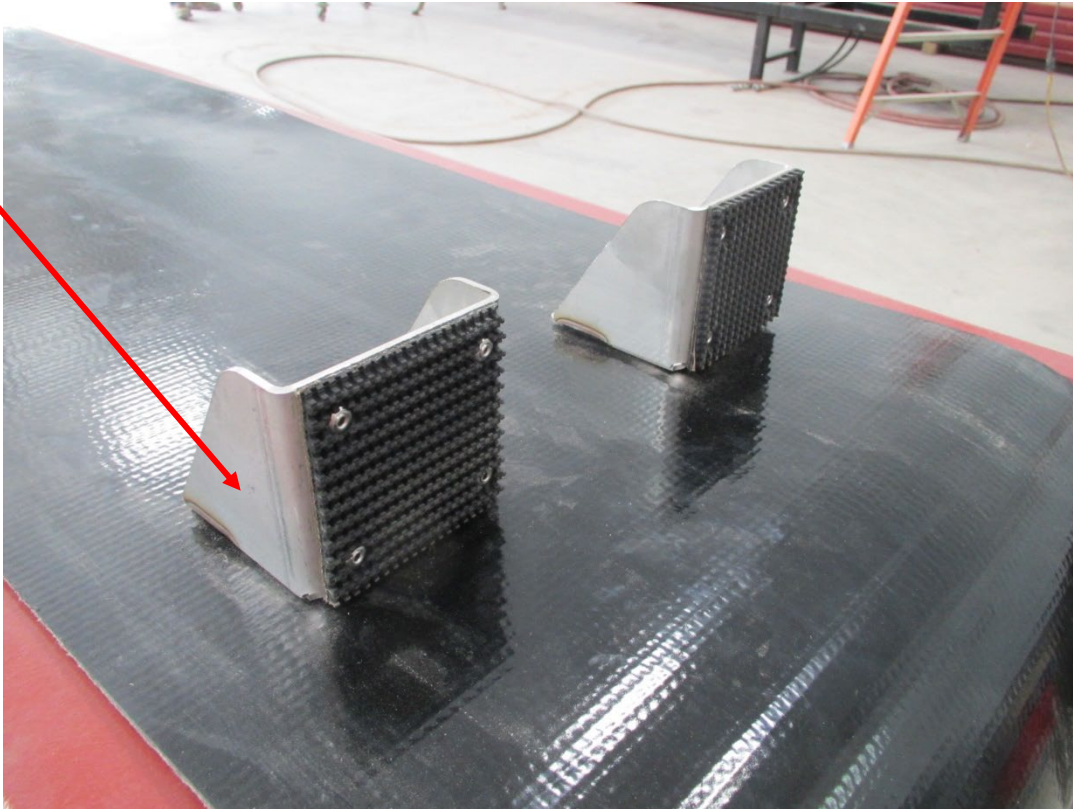
Belt & Lacing Assembly



	Part Number	Part Description
1	8022	Belt & Lacing PVC style cover by cover (belt & lacing only) (8022-031 thru 8022-043)
1	8053	Belt & Lacing PVC style cover by cover (w/ paddles & hardware installed) (8053-031 thru 8053-043)
2	8046	R2 Alligator Clips 2 strips of 9 (pkg of 18)
3	8047	R2 Lacing Connecting Cable 16" and Washers
4	8048	R2 Rivets (pkg of 18)

Paddle w/Grip Pad & Hardware

1

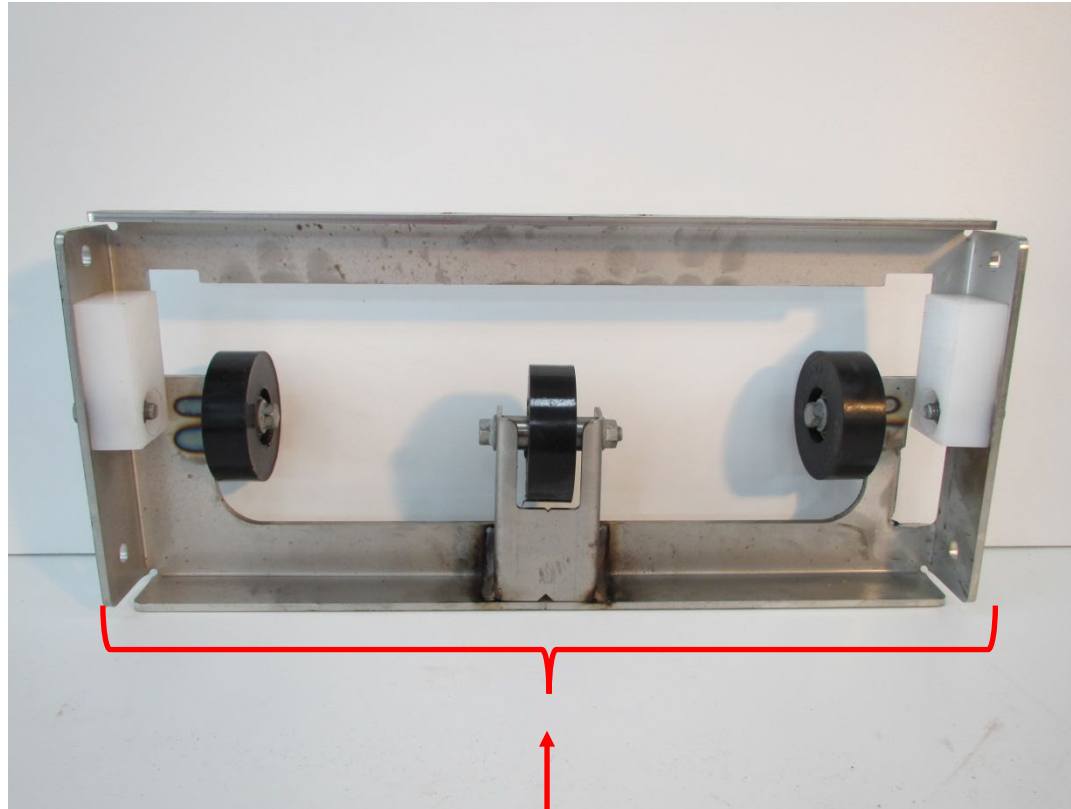


1



	Part Number	Part Description
1	8024	Paddle w/Grip Pad & Hardware

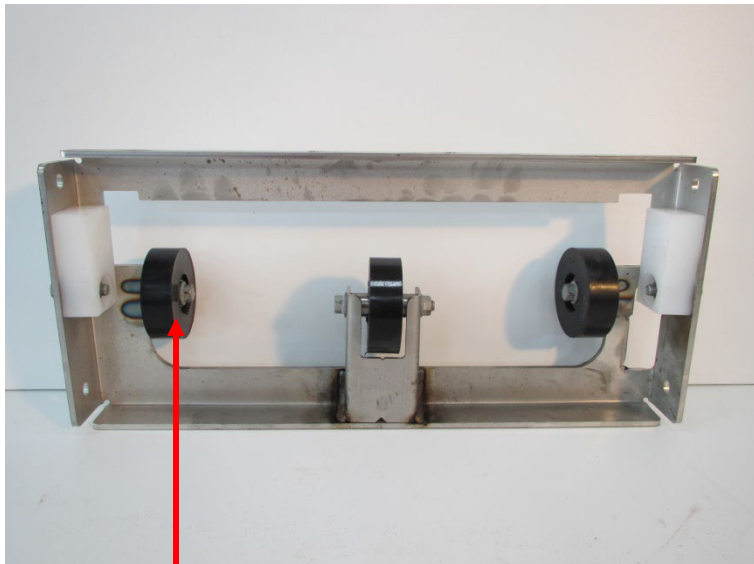
Cross Support Assembly



1

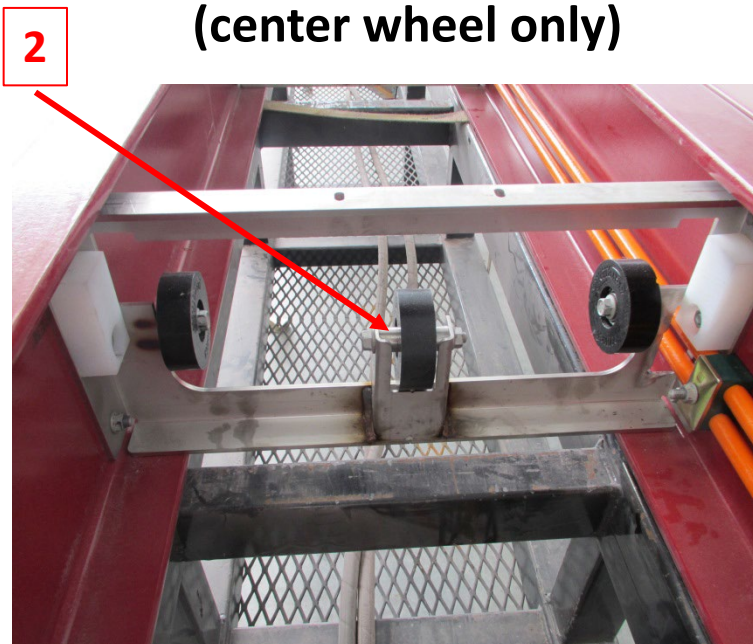
	Part Number	Part Description
1	8029	Cross Support Assembly w/ mounting hardware

Cross Support Idler Wheel



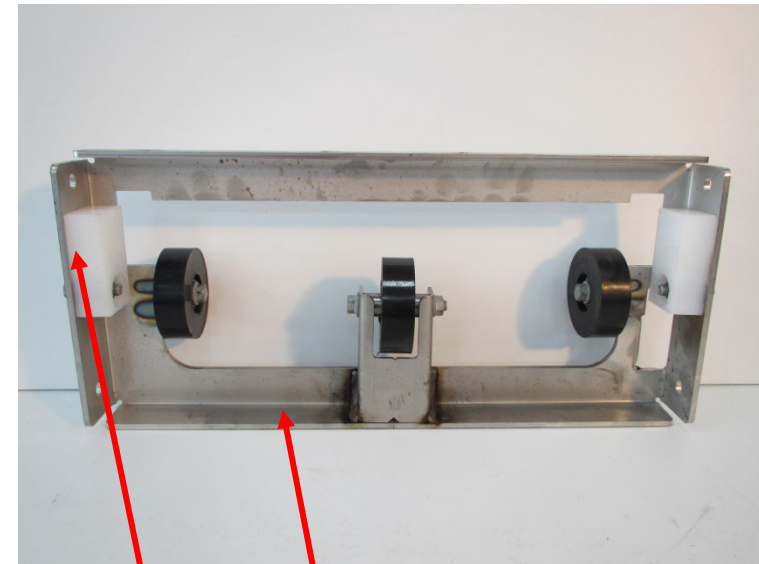
1

Cross Support Idler Wheel Bushing (center wheel only)



2

Cross Support Nylon Guide

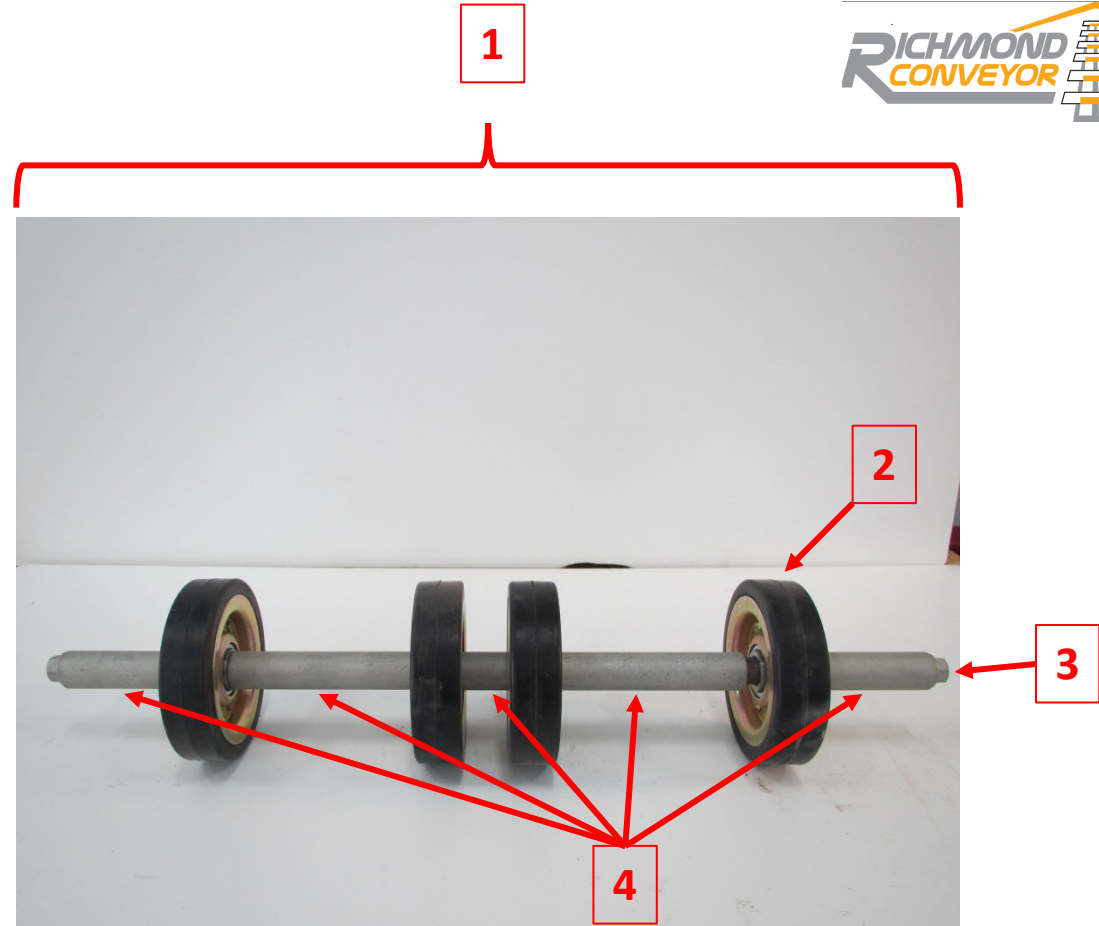
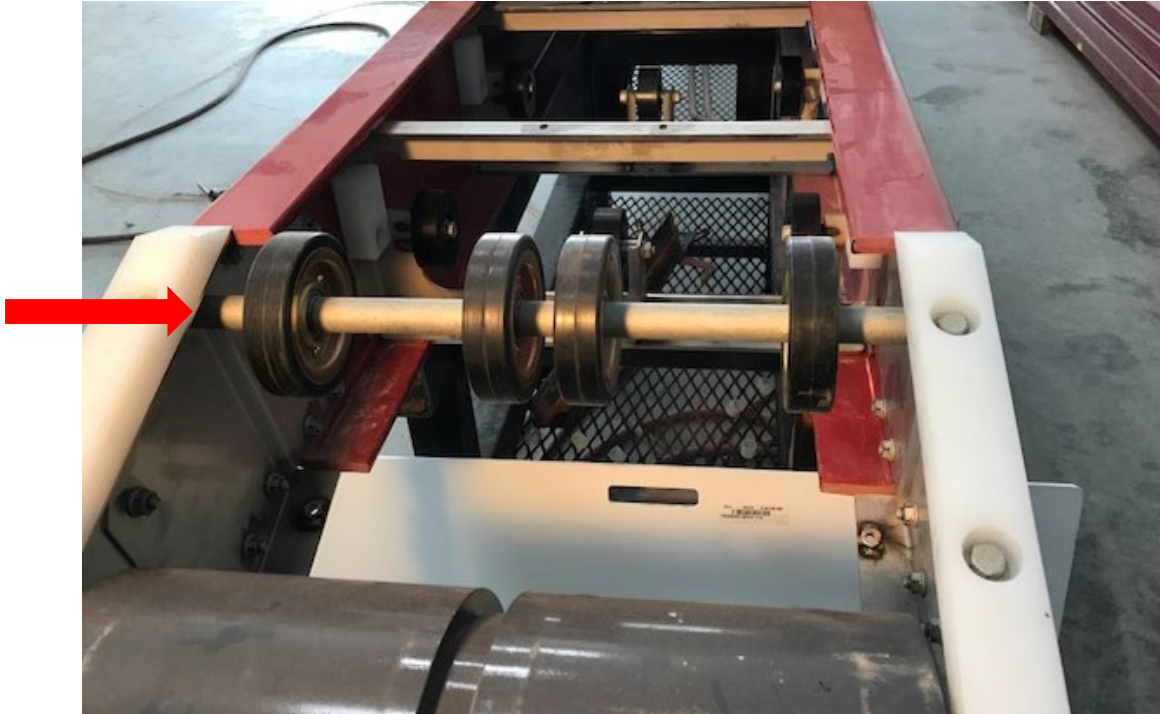


3

4

	Part Number	Part Description
1	8029-001	Cross Support Idler Wheel
2	8029-002	Cross Support Idler Wheel Bushing (center wheel only)
3	8029-003	Cross Support Nylon Guide
4	8029-004	Cross Support Weldment

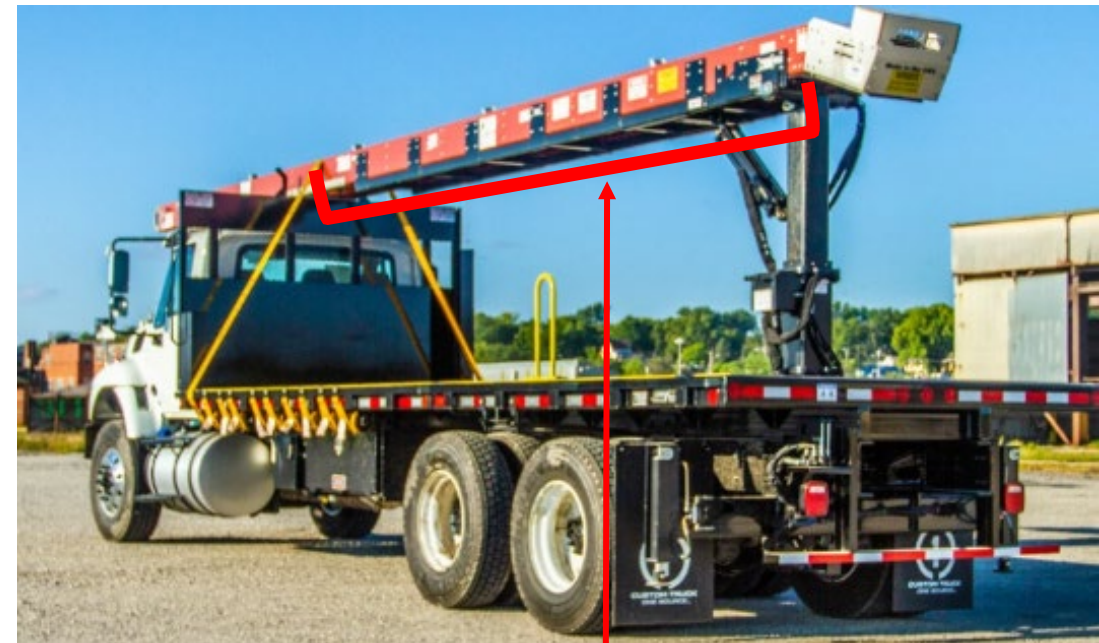
Roller Support Shaft Assembly



	Part Number	Part Description
1	8032	Roller Support Shaft Assembly
2	8032-001	Roller Support Shaft Wheel
3	8032-002	Roller Support Shaft
4	8032-003	Roller Support Shaft Spacer kit (5 per kit)

Cradle

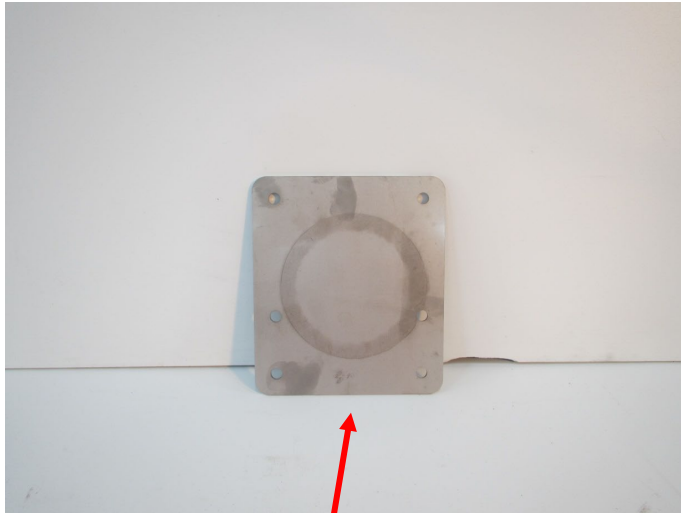
1



2

	Part Number	Part Description
1	6452	Cradle only - complete weldment Black
2	6453	Cradle - complete weldment Black Installed w/ hardware and backer plates

Cradle Backer Plate



1



Installed (inside view)



Installed (outside view)

	Part Number	Part Description
1	8033	Cradle Backer Plate 12ga. 201 stainless steel

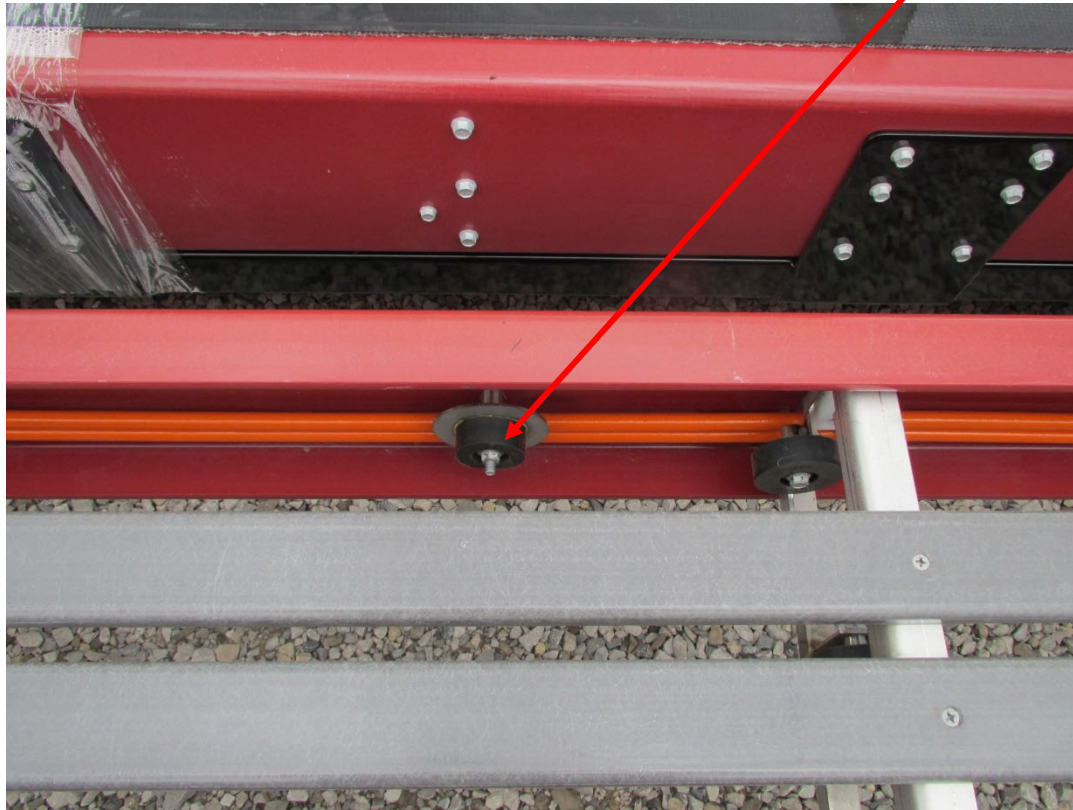
Conveyor Support Angle stainless steel



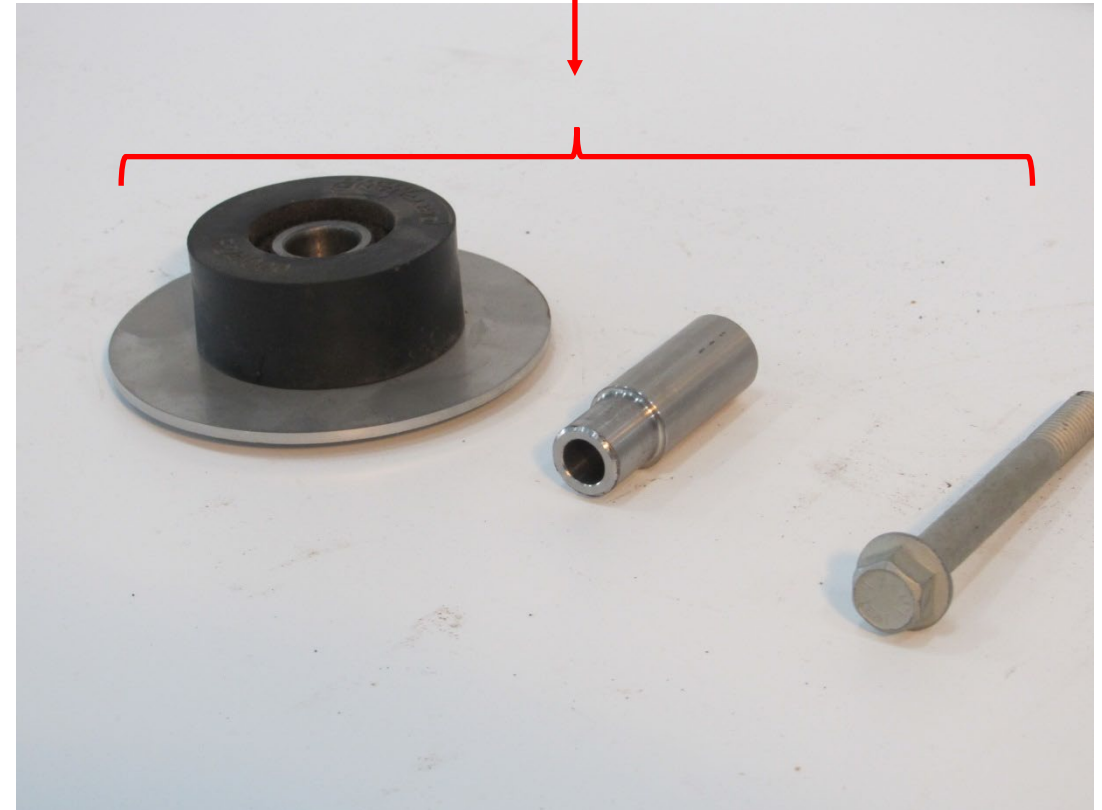
	Part Number	Part Description
1	8034	Conveyor Support Angle stainless steel

Flange Roller Assembly

1



1

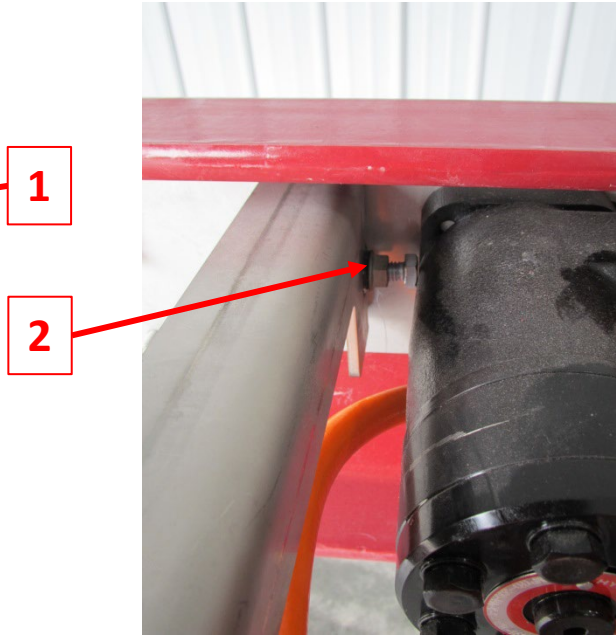


	Part Number	Part Description
1	8035	Flange Roller Assembly w/hardware (return side)

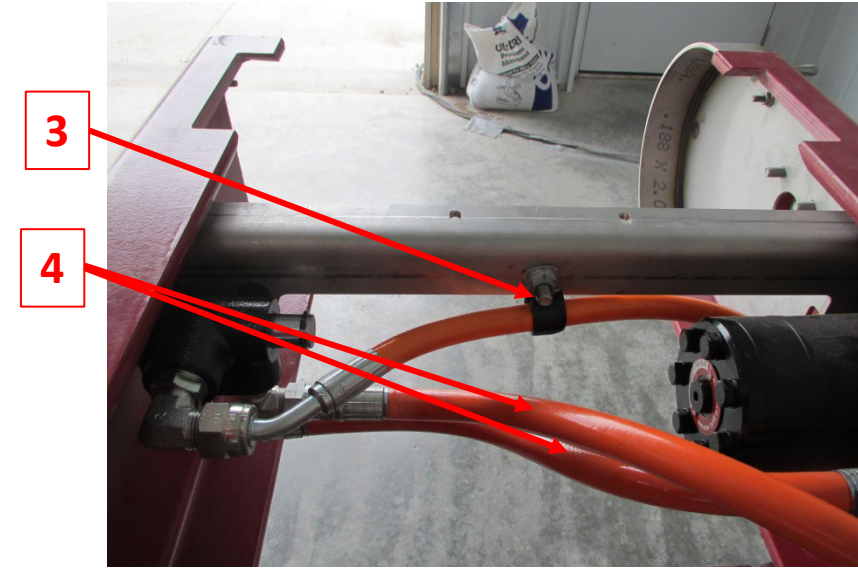
Support Bracket for E-Stop & Motor adjuster



Hydraulic Motor adjuster bolt



Loom clamp & hose



	Part Number	Part Description
1	8036	Support Bracket for E-Stop & Motor adjuster
2	8037	Hydraulic Motor adjuster bolt
3	8038	Loom clamp
4	8044	Hose for E-Stop and Hydraulic Motor